

The new Silvertown Tunnel opens 7 April 2025 near the Blackwall Tunnel

A guide to help residents prepare



Contents

About the Silvertown Tunnel.	2
Silvertown and Blackwall tunnels map ...	3
Bus routes through the tunnels	4
Free bus fares	4
Refunded DLR fares	4
What are the charges and when do they apply?	5
How and when do you pay the charge? ..	6
Discounts for local residents on certain low income benefits	7
Discount for local small businesses and charities	7
100 per cent discount	8
Exemptions and NHS reimbursements ...	8
New cross-river cycle shuttle	9
Public transport across the city	10

About the Silvertown Tunnel

The new Silvertown Tunnel under the Thames will open 7 April 2025, linking Silvertown to the Greenwich Peninsula.

The new tunnel will help make peak time journeys faster* and will enable new cross-river public transport links. The tunnel will also provide road users with an alternative crossing when the Blackwall Tunnel is closed.

Currently there is chronic congestion around the Blackwall Tunnel area, with frequent closures – more than 700 times a year – resulting in poor air quality and long queues of slow traffic. Without the new tunnel, air quality and congestion around the Blackwall Tunnel are predicted to get worse.

Once the tunnel opens, user charges will apply each way through both tunnels, unless you or your vehicle are exempt from paying the charge.

User charges will help to balance the flow of traffic, repay the build costs, and contribute to the on-going maintenance and operation of the tunnel. Any surplus revenue will be reinvested in London's transport network.

* Faster during peak times (Mon-Fri 06:00 to 10:00 northbound, 16:00 to 19:00 southbound), based on modelled data.

New Silvertown Tunnel



Bus routes through the tunnels

The new Silvertown Tunnel offers more cross-river, zero-emission* bus services using a dedicated bus lane.

Along with an existing bus route through the Blackwall Tunnel, there will be 21 buses an hour during peak times (07:00 – 19:00 Monday to Friday) crossing the river.

These routes include:

New Superloop SL4 – Express service stopping in key town centres between Westferry Circus in Canary Wharf to Grove Park via Silvertown Tunnel

Route 129 – Extended to run between Great Eastern Quay and Lewisham through Silvertown Tunnel

Route 108 – Between Stratford and Lewisham through Blackwall Tunnel

Free bus fares

Once Silvertown Tunnel opens, free pay as you go bus fares will be available on routes going through the tunnels until at least 7 April 2026.

Touch in with your chosen payment method as you board the bus, and you will not be charged for your journey.

To be eligible you must ensure that your payment method is valid for travel and that you have pay as you go credit on your Oyster card.

Refunded DLR fares

Once Silvertown Tunnel opens, refunded pay as you go DLR fares will also be available for journeys made between the following station pairs until at least 7 April 2026:

Greenwich or Cutty Sark – Island Gardens

Woolwich Arsenal – King George V

Touch in and out with your chosen payment method at the stations and the fare for your journey will be charged.

For contactless payments a refund will automatically be issued to your bank account in at least 14 days of completing your journey.

For Oyster card payments after at least 14 days of completing your journey a refund will be processed. You will then have up to 4 days to pick up your refund by touching your Oyster card on a yellow reader.

For more information on bus and DLR travel concessions visit tfl.gov.uk/new-silvertown

*at the tailpipe

What are the charges and when do they apply?

The tunnels are open 24 hours, every day of the year, but charges will apply during specific hours to help manage the flow of traffic.

User charges will apply each way through both the Silvertown and Blackwall tunnels, unless you or your vehicle are exempt from paying the charge.

Charges will apply from 06:00 – 22:00 seven days a week, every day of the year except Christmas Day (25 December).

Registering for Auto Pay allows you to access lower off-peak charges.

To register for Auto Pay visit
tfl.gov.uk/auto-pay


For more information on tunnel charges, and DVLA vehicle classifications visit
tfl.gov.uk/tunnel-charges

Exemptions are available for certain people and vehicles, for more information visit
tfl.gov.uk/tunnel-discounts

Vehicle types	Peak charges (Auto Pay) Mon – Fri Northbound 06:00 – 10:00 Southbound 16:00 – 19:00	Off-peak charges (Auto Pay) All other times between 06:00 – 22:00 (including weekends)	Charges paid via phone, online or app At all times	22:00 – 06:00 No charges apply
Motorcycles, mopeds, and motor tricycles	£2.50	£1.50	£2.50	Free
Cars and small vans DVLA classification (M1, N1 (i))	£4.00	£1.50	£4.00	Free
Large vans DVLA classification (N1(ii), N1 (iii))	£6.50	£2.50	£6.50	Free
Heavy goods vehicles*	£10.00	£5.00	£10.00	Free

Penalty Charge Notice (PCN) for non-payment – £180 (Reduced by £90 if paid within two weeks; maximum one PCN per day per vehicle)

* The Silvertown Tunnel includes a dedicated lane for HGVs and buses.



How and when do you pay the charge?

The easiest way to pay is by registering for Auto Pay. Lower off-peak charges are only available through Auto Pay.

You can set up a direct debit mandate or register a debit or credit card to your account. The system will automatically check whether you need to pay the Silvertown and Blackwall tunnel charges and will automatically bill your registered payment method each month.

It is free to register, and it means you will never forget to pay the charge or risk a fine for vehicles registered on your Auto Pay service.

To register for Auto Pay visit
tfl.gov.uk/auto-pay

If you choose to pay using the following payment methods mentioned and not register for Auto Pay, you will not be able to benefit from the lower off-peak charges.

You can pay the charge via the official TfL Pay to Drive in London app which can be downloaded for free from the Apple App Store and Google Play store.



You can also pay online at tfl.gov.uk/pay-to-drive or by phone 0343 222 2222 from 08:00 – 20:00 Monday to Friday. Service and network charges may apply (see tfl.gov.uk/terms for details).

If you drive through either tunnel and you're not signed up for Auto Pay, you will have to pay by midnight on the third day following the journey, or you can pay up to 90 days in advance of your journey.

How will it work?

Cameras will read your number plate as you enter the tunnel and will check whether you have paid the charge or whether your vehicle is exempt from paying the charge.

There will be no barriers or tollbooths at either tunnel nor can you pay at the tunnel.



Discounts for local residents on certain low income benefits

Residents on certain benefits living in 12 east and south-east London boroughs and the City of London will be eligible for a 50 per cent discount on their tunnel user charges.

This discount will be available until at least 7 April 2028.

The eligible benefits are:

- Income Support
- Income-related Employment & Support Allowance
- Income-based Jobseeker's Allowance
- Universal Credit
- Pension Credit
- Child Tax Credit
- Working Tax Credit
- Carer's Allowance
- Housing Benefit

Residents must live in Barking & Dagenham, Bexley, Bromley, City of London, Greenwich, Hackney, Havering, Lewisham, Newham, Redbridge, Southwark, Tower Hamlets or Waltham Forest.

Pre-register now for this discount by visiting tfl.gov.uk/east-london-discount

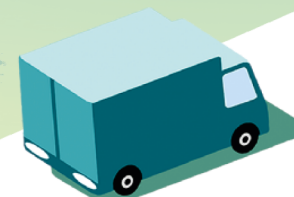
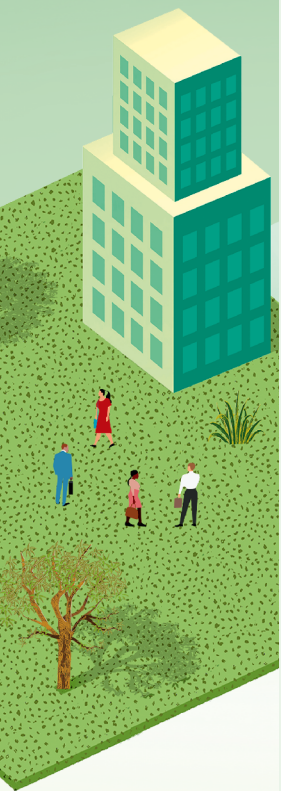
Discount for local small businesses and charities

Eligible small businesses, sole traders and charities will be eligible for a £1 discount on the off-peak charge on a maximum of three vehicles.

This discount will be available until at least 7 April 2026. The off-peak charge is only available for vehicles registered with TfL on Auto Pay.

An eligible business or charity must be registered in one of the following boroughs: Greenwich, Newham or Tower Hamlets.

To find out if your small business is eligible and to pre-register for this discount visit tfl.gov.uk/business-discount



100 per cent discount (when registered with TfL)

This discount applies for the following people and vehicles:

- Blue Badge holders – You need to be registered with TfL for the 100 per cent Blue Badge discount. If your vehicle is registered for this discount no further action is needed, you will not be charged for using either tunnel.
- All black taxis and zero-emission capable and/or wheelchair accessible private hire vehicles (PHVs) registered with TfL.
- Recovery and breakdown vehicles – You must apply for this discount to be eligible.

To register your vehicle or apply for these discounts visit tfl.gov.uk/tunnel-discounts

Exemptions

The following vehicles are exempt from the tunnel charges and don't require you to take any action:

- DVLA-registered minibuses, buses and coaches
- NHS vehicles exempt from vehicle tax

For more information on discounts and exemptions visit tfl.gov.uk/tunnel-discounts

NHS patient and staff reimbursements

- NHS patients are eligible to claim reimbursement for journeys to and from the hospital if clinically assessed as too ill to travel on public transport. Your hospital will tell you if you are eligible. For more information and guidance on claiming a reimbursement visit tfl.gov.uk/nhs-reimbursement
- NHS staff may be eligible for reimbursements through the NHS reimbursement scheme. For the full eligibility criteria and guidance on claiming reimbursement visit tfl.gov.uk/nhs-reimbursement



Cycle shuttle stops and cycle network near the Silvertown Tunnel



New cross-river cycle shuttle

Cyclists will be able to cross the river through the Silvertown Tunnel using a new, dedicated free cycle shuttle service.

This will enable cyclists to travel safely across the river with their bikes on a bespoke high-frequency shuttle bus, which will be free until at least 7 April 2026.

This service will operate from 06:30 – 21:30 every day (excluding Christmas day) and will connect cycle routes either side of the river with shuttle stops at Seagull Lane and Millennium Way.

Free cycle training is available for all abilities, whether you're new to cycling or just want to brush up on your skills. You can learn online, one-to-one or in a group with an instructor in your borough (subject to funding and availability).

To book your free cycle training course visit tfl.gov.uk/cycle-skills



Public transport across the city

Choose bus, Tube, DLR, Tram, Elizabeth line or London Overground for good value transport options.

Travelling off-peak is cheaper and quieter – visit tfl.gov.uk/fares to check the cost of your journey before you travel.

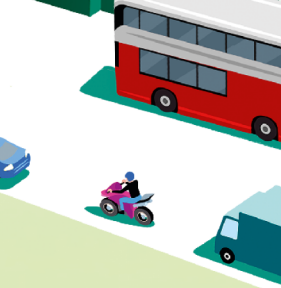
The Mayor of London and TfL are also planning to expand bus routes further in outer London to help make travelling by public transport even easier.

Travel confidently around London with maps and live travel updates on our official TfL Go travel app, which is available free from the Apple App Store and Google Play store.



TfL Go can help you to plan step-free journeys, look up station facilities and shows you when lines, stations and lifts are closed or affected by disruptions in real time.

As well as the fastest public transport routes, the app offers alternative routes to give you more travel options and provides walking and cycling routes to consider for all or part of your journey.





tfl.gov.uk/silvertown-blackwall



24 hour travel information
0343 222 1234*



Sign up for email updates
tfl.gov.uk/emailupdates



tfl.gov.uk/socialmedia

*Service and network charges may apply.
See tfl.gov.uk/terms for details.

Version 1.0.
Publish date 21 February 2025