

# The Silvertown and Blackwall tunnels

A guide to help businesses



# Contents

About the Silvertown Tunnel. . . . .	2
Silvertown and Blackwall tunnels map . . .	3
What are the charges and when do they apply? . . . . .	4
How and when do you pay the charge? . .	5
Discount for local small businesses and charities . . . . .	6
Discounts for local residents on certain low income benefits . . . . .	6
100 per cent discount . . . . .	6
Bus routes through the tunnels . . . . .	7
Free bus fares . . . . .	7
Refunded DLR fares . . . . .	7
Public transport across the city . . . . .	8
Cross-river cycle shuttle. . . . .	8

# About the Silvertown Tunnel

The Silvertown Tunnel under the Thames links Silvertown to the Greenwich Peninsula.

The tunnel helps make peak time journeys faster\* and provides businesses with an additional route to access customers both sides of the river. The tunnel also increases cross-river public transport links and provides road users with an alternative crossing when the Blackwall Tunnel is closed.

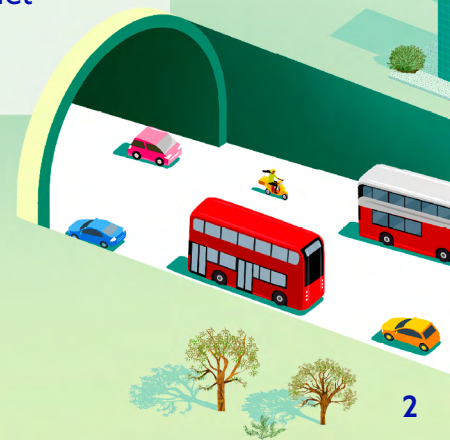
There has been chronic congestion around the Blackwall Tunnel area, with frequent closures – more than 700 times a year – resulting in poor air quality and long queues of slow traffic.

User charges apply each way through both tunnels, unless your vehicle is exempt from the charge.

User charges help to balance the flow of traffic, repay the build costs, and contribute to the on-going maintenance and operation of the tunnel. Any surplus revenue is reinvested in London's transport network.

To support eligible small businesses and charities, a discount on the tunnel charges is available at certain times.

\* Faster during peak times (Mon-Fri 06:00 to 10:00 northbound, 16:00 to 19:00 southbound), based on modelled data.



# New Silvertown Tunnel



## What are the charges and when do they apply?

The tunnels are open 24 hours, every day of the year, but charges apply during specific hours to help manage the flow of traffic.

User charges apply each way through both the Silvertown and Blackwall tunnels, unless your vehicle is exempt from the charge.

Charges apply from 06:00 – 22:00 seven days a week, every day of the year except Christmas Day (25 December).

For more information on tunnel charges for your vehicle and when they apply visit the [TfL Vehicle Checker](#)

Registering for Auto Pay (including Fleet Auto Pay for businesses with 6 or more vehicles) allows you to access lower off-peak charges.


To register for Auto Pay visit  
[tfl.gov.uk/auto-pay](https://tfl.gov.uk/auto-pay)

Exemptions are available for certain vehicles, for more information visit  
[tfl.gov.uk/tunnel-discounts](https://tfl.gov.uk/tunnel-discounts)

Vehicle types	Peak charges (Auto Pay) Mon – Fri Northbound 06:00 – 10:00 Southbound 16:00 – 19:00	Off-peak charges (Auto Pay) All other times between 06:00 – 22:00 (including weekends)	Charges paid via phone, online or app At all times	22:00 – 06:00 No charges apply
Motorcycles, mopeds, and motor tricycles	£2.50	£1.50	£2.50	Free
Cars and small vans	£4.00	£1.50	£4.00	Free
Large vans	£6.50	£2.50	£6.50	Free
Heavy goods vehicles*	£10.00	£5.00	£10.00	Free

**Penalty Charge Notice (PCN) for non-payment** – £180 (Reduced by £90 if paid within two weeks; maximum one PCN per day per vehicle)

\* The Silvertown Tunnel includes a dedicated lane for HGVs and buses.



## How and when do you pay the charge?

The easiest way to pay is by registering for Auto Pay. Lower off-peak charges are only available through Auto Pay.

You can set up a direct debit mandate or register a debit or credit card to your account. The system will automatically check whether you need to pay the Silvertown and Blackwall tunnel charges and will automatically bill your registered payment method each month.

It is free to register, and it means you will never forget to pay the charge or risk a fine for vehicles registered on your Auto Pay service.

To register for Auto Pay visit  
[tfl.gov.uk/auto-pay](https://tfl.gov.uk/auto-pay)

If you choose to pay using the following payment methods mentioned and not register for Auto Pay, you will not be able to benefit from the lower off-peak charges.

You can pay the charge via the official TfL Pay to Drive in London app which can be downloaded for free from the Apple App Store and Google Play store.



You can also pay online at [tfl.gov.uk/pay-to-drive](https://tfl.gov.uk/pay-to-drive) or by phone 0343 222 2222 from 08:00 – 20:00 Monday to Friday. Service and network charges may apply (see [tfl.gov.uk/terms](https://tfl.gov.uk/terms) for details).

If you drive through either tunnel and you're not signed up for Auto Pay, you will have to pay by midnight on the third day following the journey, or you can pay up to 90 days in advance of your journey.

## How does it work?

Cameras read your number plate as you enter the tunnel and will check whether you have paid the charge or whether your vehicle is exempt from the charge.

There will be no barriers or tollbooths at either tunnel nor can you pay at the tunnel.



## Discount for local small businesses and charities

Eligible small businesses, sole traders and charities can register for a £1 discount on the off-peak charge on a maximum of three vehicles.

This discount is available until at least 7 April 2026.

The off-peak charge is only available for vehicles registered with TfL on Auto Pay.

An eligible business or charity must be registered in one of the following boroughs: Greenwich, Newham or Tower Hamlets.

To find out if your small business is eligible and to register for this discount visit [tfl.gov.uk/business-discount](https://tfl.gov.uk/business-discount)

## Discounts for local residents on certain low income benefits

Eligible residents on certain benefits can register for a 50 per cent discount on their tunnel user charges.

This discount is available until at least 7 April 2028.

Residents must live in Barking & Dagenham, Bexley, Bromley, City of London, Greenwich, Hackney, Havering, Lewisham, Newham, Redbridge, Southwark, Tower Hamlets or Waltham Forest.

For more information on eligible benefits and to register visit [tfl.gov.uk/east-london-discount](https://tfl.gov.uk/east-london-discount)

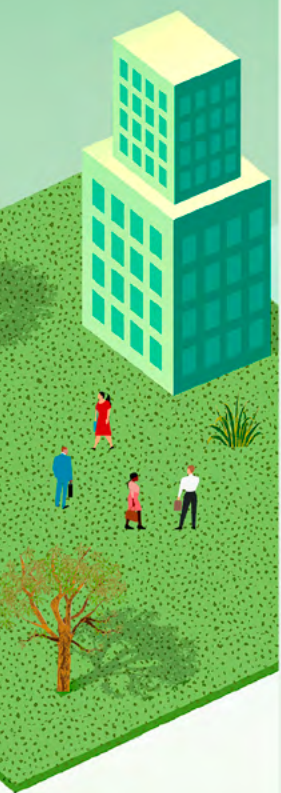
## 100 per cent discount (when registered with TfL)

These discounts apply for the following vehicles:

- All black taxis
- Zero-emission capable and / or wheelchair accessible private hire vehicles (PHVs)
- Recovery and breakdown vehicles – you must apply for this discount to be eligible

Other discounts and exemptions are available.

To find out more, register your vehicle or apply visit [tfl.gov.uk/tunnel-discounts](https://tfl.gov.uk/tunnel-discounts)





## Bus routes through the tunnels

The Silvertown Tunnel offers more cross-river, zero-emission\* bus services using a dedicated bus lane.

Along with an existing bus route through the Blackwall Tunnel, there are 21 buses an hour during peak times (07:00 – 19:00 Monday to Friday) crossing the river.

These routes include:

New Superloop SL4 – Express service stopping in key town centres between Westferry Circus in Canary Wharf to Grove Park via Silvertown Tunnel

Route 129 – Extended to run between Great Eastern Quay and Lewisham through Silvertown Tunnel

Route 108 – Between Stratford and Lewisham through Blackwall Tunnel

## Free bus fares

Free pay as you go bus fares are available on routes going through the tunnels until at least 7 April 2026.

\* at the tailpipe

Touch in with your chosen payment method as you board the bus, and you will not be charged for your journey.

To be eligible you must ensure that your payment method is valid for travel and that you have pay as you go credit on your Oyster card.

## Refunded DLR fares

Refunded pay as you go DLR fares are also available for journeys made between the following station pairs until at least 7 April 2026:

Greenwich or Cutty Sark\* – Island Gardens

Woolwich Arsenal – King George V

Touch in and out with your chosen payment method at the stations and the fare for your journey will be charged.


For contactless payments a refund will automatically be issued to your bank account in at least 14 days of completing your journey.

For Oyster card payments after at least 14 days of completing your journey a refund will be processed. You will then have up to 4 days to pick up your refund by touching your Oyster card on a yellow reader.

For more information on bus and DLR travel concessions visit [tfl.gov.uk/new-silvertown](https://tfl.gov.uk/new-silvertown)

\* Cutty Sark station will be closed from Saturday 31 May 2025 until next spring





## Public transport across the city

Choose bus, Tube, DLR, Tram, Elizabeth line or London Overground for good value transport options.

Travelling off-peak is cheaper and quieter – visit [tfl.gov.uk/fares](https://tfl.gov.uk/fares) to check the cost of your journey before you travel.

The Mayor of London and TfL are also planning to expand bus routes further in outer London to help make travelling by public transport even easier.

Travel confidently around London with maps and live travel updates on our official TfL Go travel app, which is available free from the Apple App Store and Google Play store.



TfL Go can help you to plan step-free journeys, look up station facilities and shows you when lines, stations and lifts are closed or affected by disruptions in real time.

As well as the fastest public transport routes, the app offers alternative routes to give you more travel options and provides walking and cycling routes to consider for all or part of your journey.

## Cross-river cycle shuttle

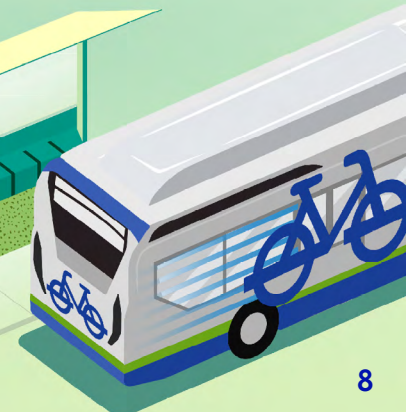
Cyclists can cross the river through the Silvertown Tunnel using a dedicated free cycle shuttle service.

This enables cyclists to travel safely across the river with their bikes on a bespoke high-frequency shuttle bus, which is free until at least 7 April 2026.

This service operates from 06:30 – 21:30 every day (excluding Christmas day) and connects cycle routes either side of the river with shuttle stops at Seagull Lane and Millennium Way.

For more information on the Silvertown Tunnel cycle shuttle visit [tfl.gov.uk/cycle-shuttle-service](https://tfl.gov.uk/cycle-shuttle-service)

For a map of cycleway routes and other information about cycling visit [tfl.gov.uk/cycling](https://tfl.gov.uk/cycling)





[tfl.gov.uk/silvertown-blackwall](https://tfl.gov.uk/silvertown-blackwall)



24 hour travel information  
**0343 222 1234\***



Sign up for email updates  
[tfl.gov.uk/emailupdates](https://tfl.gov.uk/emailupdates)



[tfl.gov.uk/socialmedia](https://tfl.gov.uk/socialmedia)

\*Service and network charges may apply.  
See [tfl.gov.uk/terms](https://tfl.gov.uk/terms) for details.

Version 2.0  
Publish date 25 April 2025